

Company Profile



Hitachi Industrial Equipment Systems Co., Ltd. is a company that provides products used in factories, solutions for factories' adoption of IoT and automation, and reliable maintenance services.

With the advance of digital technology, society as we know it is currently undergoing major changes, which is bringing the manufacturing field face-to-face with many challenges.

As a team of professionals in "Monozukuri" manufacturing, we take full advantage of the knowledge and knowhow that we've accumulated over the years to offer products, solutions, and services with highly added value to resolve the issues of our customers.

By connecting product to product, product to person, and person to person, we create new value to provide to our customers.

It is the mission of Hitachi Industrial Equipment Systems.

Beyond the Fut

Creating New Value via "Connect, Link"





Product

**Supporting society together
with our customers**

Solution

Service

ure

What we can do to solve our customers'

We provide all-encompassing systems, from the implementation of connected products, robotics, and digital solutions all the way to after-sales services, to ensure highly reliable facility equipment and to achieve IoT integration and automation for factories.



Air Compressor System

Air compressor plays an important role in the operation of a factory's production line. Hitachi's lineup includes both oil-free and oil-flooded types, ranging from small to large sizes. These products support a wide variety of requirements in terms of appropriate volumes, pressures, and positions. In addition, we respond to many diverse needs with our products that can integrate equip-

ment such as blowers and air blocks. Furthermore, we contribute to reducing customers' life cycle cost for equipment by providing maintenance management by means of a cloud monitoring service that is compatible with IoT integration.



Pumps

Water supply pumps are absolutely essential in our everyday lives. Hitachi offers a variety of pumps for large-scale factories, office buildings, hospitals, waterworks, wastewater systems, and other applications.



Clean Air Equipment

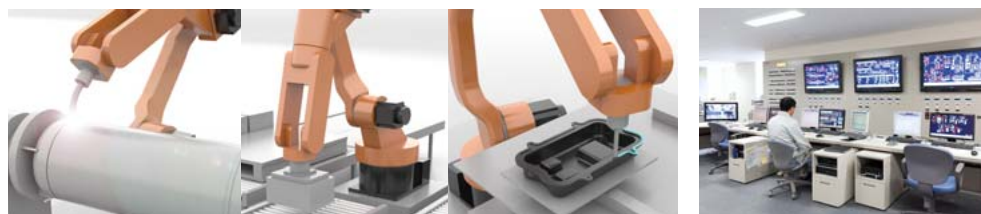
Clean air equipment provides clean environments such as those required for medical sites and food factories. The equipment secures the necessary level of cleanliness for the work environment as well as ensuring the safety of workers and the protection of test samples.



Manufacturing Solutions

From the automation of production lines to achieving IoT integration for factories, Hitachi takes full advantage of its long years of technology development and experience to provide energy-saving and labor-saving robotic solutions (robot system FA and automation). Using IoT integration to provide digital solutions (information, control, and monitoring) from the planning stage and

throughout the design, manufacturing, and installation stages, Hitachi brings production sites' various issues into view. Furthermore, we provide solutions that meet the needs of customers at all stages, including maintenance after equipment implementation. Hitachi is contributing toward the realization of tomorrow's smart factories.





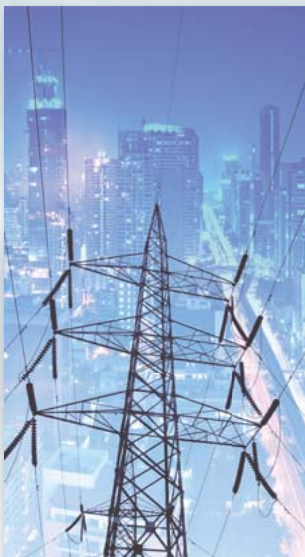
For further information on Products Go here



Marking Systems

Printing the expiration dates of food products, pharmaceuticals, and cosmetics, and the lot numbers of electrical parts, is a fundamental practice for production management, quality control, and supply management. Hitachi supports the traceability management of its custom-

ers with industrial inkjet printers, laser markers, printing inspection devices, and other equipment. Combining these with equipment such as conveyors, we provide a diverse range of printing line solutions.



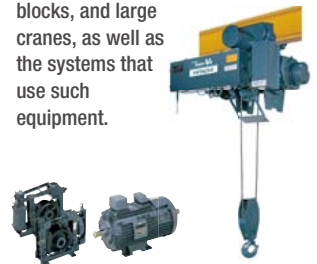
Electric Power Receiving, Transforming, and Distribution Systems

From low voltage to extra high voltage, we provide a diverse lineup of equipment for power receiving, transforming, and distribution. Combining our equipment with our systems helps achieve a steady supply of power and improves the efficiency of both operation and maintenance.



Crane Systems and Related Equipment

We contribute towards the overall improvement of efficiency and labor saving for conveyance work through electrical products for overhead cranes and hoists, motor blocks, and large cranes, as well as the systems that use such equipment.



Drive Systems and IoT Component

For a factory's IoT integration and the automation of production lines, we offer controllers as well as secure radio communication equipment for linking facilities and devices for seamless production. In addition, we provide positioning components that make use of GPS and lasers to detect the positions of AGVs* indoors and outdoors to support autonomous cruising. We also provide an exten-

sive lineup of motors to drive various devices as well inverters for changing the rotation speed of motors.

*AGV: Automated Guided Vehicle



After more than 100 years, we will take our “Monozukuri” Manufacturing DNA to the next stage.

For more than a century,
Hitachi products have continued to evolve from the
very first 5 horsepower motor used to drive machinery.
Today, all Hitachi Industrial Equipment Systems
products inherit our “Monozukuri” manufacturing DNA.

Corporate profile

Corporate Name : Hitachi Industrial Equipment Systems Co., Ltd.
Description of Business : Industrial electric equipment production, sales,
maintenance/servicing, system solutions, etc.
Representative : Yasuhiro Takeuchi, President and Director
Founded : April 1st, 2002
Capital : JPY 10 billion (wholly owned by Hitachi, Ltd.)



Top message

**Creating new value via "Connect, Link",
Hitachi Industrial Equipment Systems is
contributing to the future global society.**

The recent evolution of digital technology and accelerating global development creates diverse business challenges for our customers. At Hitachi, we promote Social Innovation Business by combining OT*, IT, and Product.

Hitachi Industrial Equipment Systems provides products and solutions utilizing IoT, striving for seamless optimization from management to factory floor. We focus on improving the three customer's values; Social value, Environmental value, and Economic value.

Our aim is to be a long term, valuable partner for our customers. Hitachi Industrial Equipment Systems is dedicated to contributing to the realization of a prosperous future and a prosperous society.

* OT: Operation Technology

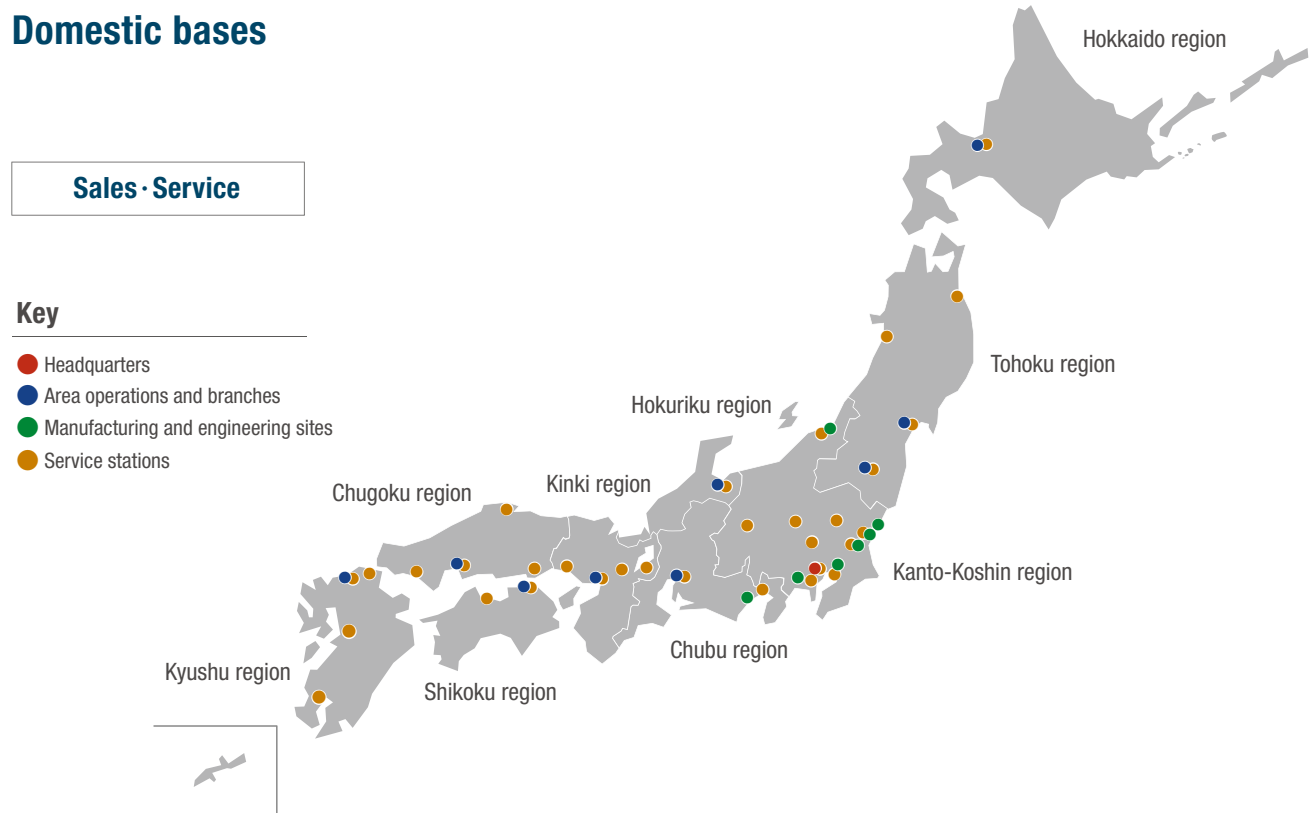
President and Director
Yasuhiro Takeuchi



In order to be the best possible partner for our customers, we

Our network can provide the detailed service and response so as to increase customers' social value

Domestic bases



Production

Narashino business office



Drives / IoT component, Pump

Higashi-Narashino 7-1-1,
Narashino-shi, Chiba Prefecture

Nakajo business office



Power distribution, Clean air

Tomioka 46-1, Tainai-shi,
Niigata Prefecture

Katsuta business office



Power distribution and control system

Nishihara 1450, Ooaza Tarazaki,
Hitachinaka-shi, Ibaraki Prefecture

Taga business office



Marking system, Hoist

Higashitagacho 1-1-1,
Hitachi-shi, Ibaraki Prefecture

Shimizu business office



Air compressor

Muramatsu 390, Shimizu-ku,
Shizuoka-shi, Shizuoka Prefecture

Sagami business office



Air compressor, Factory automation and solution

Kozono 1116, Ayase-shi,
Kanagawa Prefecture

Tsuchiura business office



Air compressor

Kandatsumachi 603,
Tsuchiura-shi, Ibaraki Prefecture

we have a large number of bases of operation both in Japan and abroad.

environmental value and economic value.

Group companies

Japan

Hitachi KE Systems, Ltd.



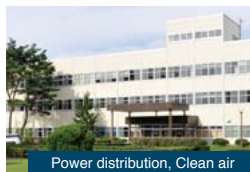
Software development

Hitachi Industrial Equipment Drive & Solutions Co., Ltd.



Drive systems

Hitachi Industrial Equipment Nakajo Engineering Co., Ltd.



Power distribution, Clean air

Hitachi Industrial Equipment Technology Service, Co., Ltd.



Maintenance service

KEC Corporation



Factory automation and solution

Overseas (Production)

Hitachi Industrial Equipment (Nanjing) Co., Ltd.



Air compressor, Inverter

People's Republic of China

Hitachi Industrial Equipment (Suzhou) Compressor Co., Ltd.



Air compressor

People's Republic of China

Hitachi Hanbell (Shanghai) Precise Machinery Co., Ltd.



Air compressor

People's Republic of China

Hitachi Industrial Technology (Thailand) Ltd.



Motor, Switch & Breaker, Blower

Kingdom of Thailand

Hitachi Soe Electric & Machinery Co., Ltd.



Transformer, Power distribution and control

Republic of the Union of Myanmar

Hitachi Industrial Equipment (Malaysia) Sdn. Bhd.



Air compressor

Malaysia

Sullair, LLC



Air compressor

United States of America

Suzhou Sullair Air Equipment Co., Ltd.



Air compressor

People's Republic of China

Overseas (Sales)

- Hitachi Industrial Equipment & Solutions America, LLC
- Hitachi Industrial Equipment Mexico, S.A. de C.V.
- Hitachi Asia Ltd.
- Hitachi Industrial Equipment Systems (China) Co., Ltd.
- Hitachi Industrial Equipment Systems (Hong Kong) Co., Ltd.
- Shanghai Sunary Electromechanical System Technology Co., Ltd.
- Hitachi Europe GmbH
- Hitachi Drives & Automation (Germany) GmbH
- Sullair Australia Pty Ltd.

 **Hitachi Industrial Equipment Systems Co., Ltd.**

AKS Bldg., 3, Kanda Neribeicho, Chiyoda-ku, Tokyo,
101-0022, Japan

URL <https://www.hitachi-ies.co.jp>